

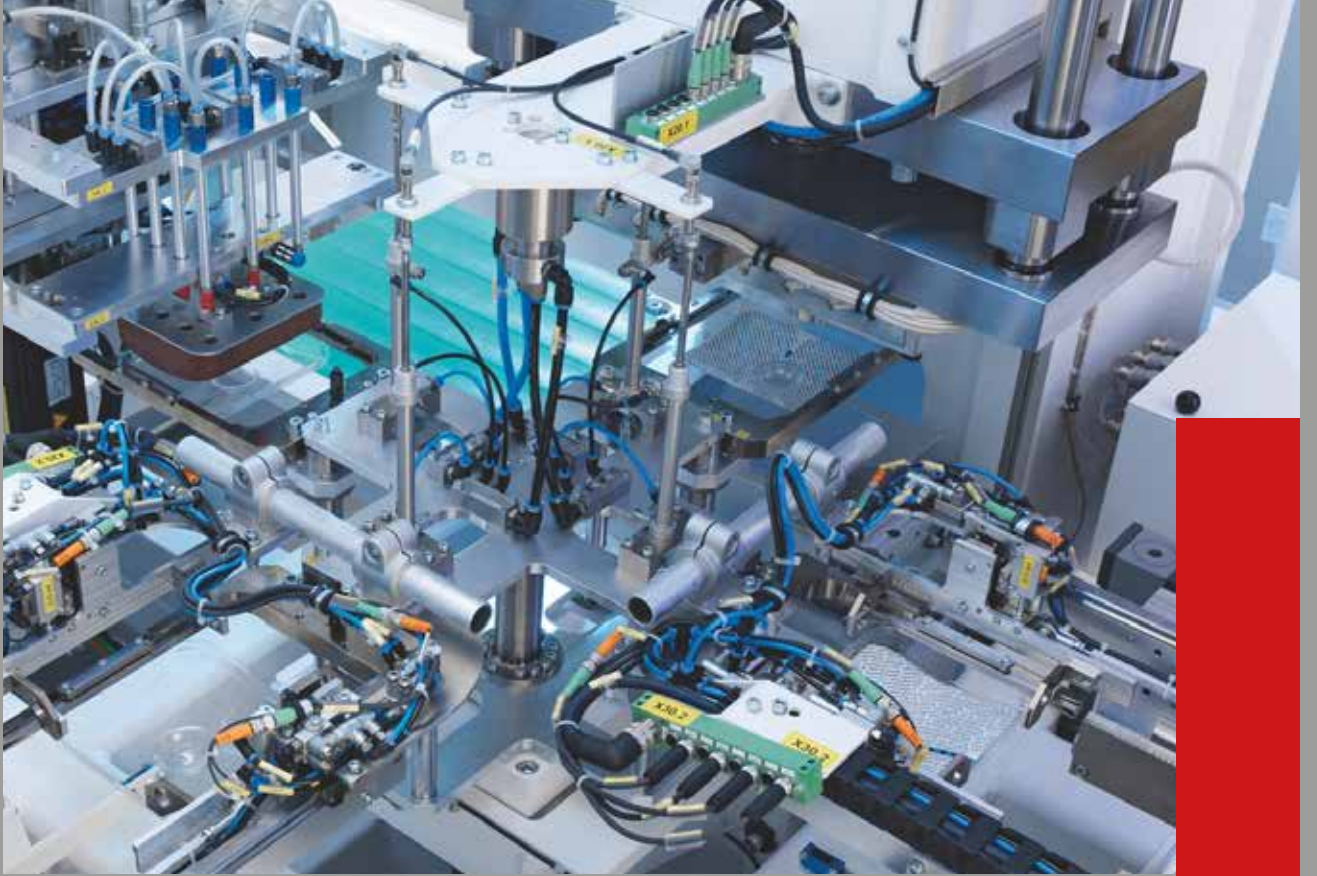


ÜRÜN KATALOĞU



HAKKIMIZDA

Rexmak Mekatronik Ltd.Şti kurulduđu yıldı bu güne özel makine imalatı, hidropnömatik silindir ve pres imalatı, talaşlı imalat fikstürleri, kontrol fikstürleri, çoklu kontrol bankoları, ağır iş Konveyör imalatı , kartezyen transfer sistemleri, tünel tip ve ultrasonik yıkama makineleri, hidrolik sistem tasarımı ve imalatı, hidrolik silindir ve booster imalatı, boru ucu kapama makinesi imalatı , dövme alıştırma kalıp imalatı konularında faaliyet göstermektedir.



ABOUT US

Since its establishment, Rexmak Mekatronik Ltd.Şti has been manufacturing special machinery, hydropneumatic cylinder and press manufacturing, machining fixtures, control fixtures, multiple control banks, heavy duty conveyor manufacturing, Cartesian transfer systems, tunnel type and ultrasonic washing machines, hydraulic system design and It operates in the fields of manufacturing, hydraulic cylinder and booster manufacturing, pipe end sealing machine manufacturing, forging practice mold manufacturing.

İÇİNDEKİLER



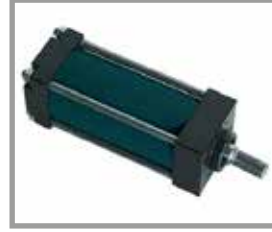
**İŞ MAKİNESİ
SİLİNDİRLERİ**
SAYFA: 5



**HİDROPNÖMATİK
SİLİNDİRLER**
SAYFA: 6-10



BOOSTER
SAYFA: 11



HİDROLİK SİLİNDİRLER
SAYFA: 12



C TİPİ PRESS
SAYFA: 13



2 SÜTUNLU PRESS
SAYFA: 14



4 SÜTUNLU PRESS
SAYFA: 15



PRESS MASALARI
SAYFA: 16



AKSESUARLAR
SAYFA: 17-18



ÖZEL MAKİNELER
SAYFA: 18



**BORU UCU KAPAMA
MAKİNESİ**
SAYFA: 19



TÜP DOLUM HATTI
SAYFA: 20



**EKSANTRİK PRESS
HİDROLİK DOANNİM
HİDROLİK PRESSLER**
SAYFA: 21



**EKSANTRİK PRESS
HİDRLİK DONANIM
ÜNİTELER**
SAYFA: 22

İŞ MAKİNESİ SİLİNDİRLERİ



HİDROPNÖMATİK SİLİNDİRLER



Clinching



Pressing



Assembling



Inserting



Coining

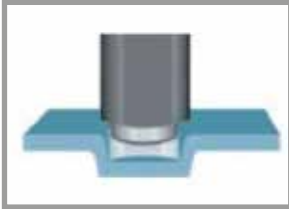


Riveting

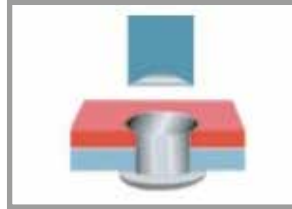


Punching

Hidropnömatik Silindirlerin Uygulama Alanları



Form Verme



Perçin Çakma



Baskı



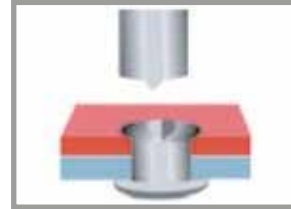
Markalama



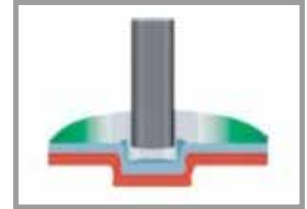
Delik Delme



Bükme

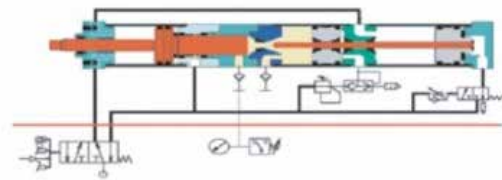
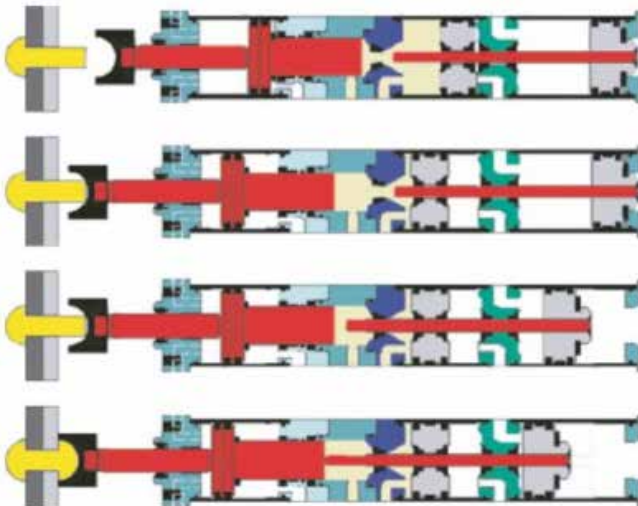


Şişirme

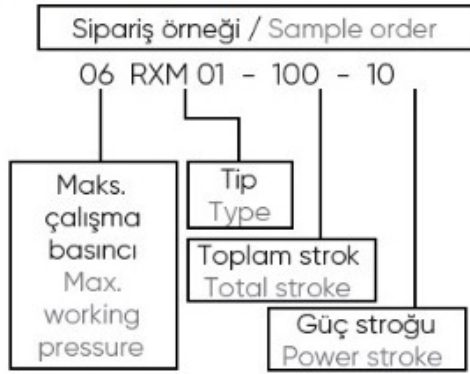
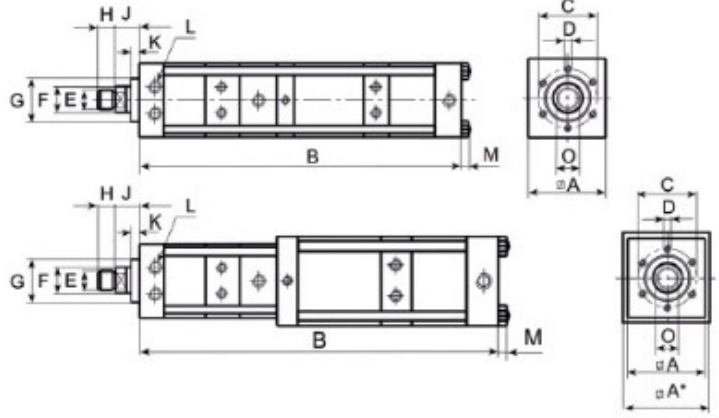


Kenetleme

Hidropnömatik Silindirlerin Çalışma Prensibi



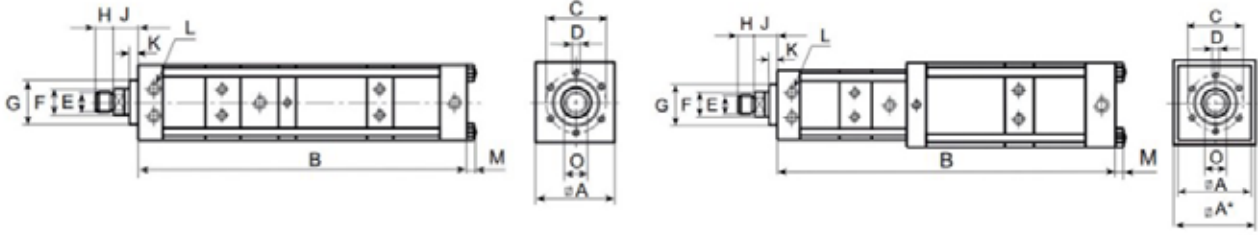
TİP RXM - 6 BAR SERİSİ, 0.6 - 100 Ton



Genel ölçü tablosu / General dimensions table

Tip Type	Toplam strok (mm)	Güç Stroğu (mm)	Maks. kuvvet (daN)	Hızlı ilerleme stroğu Fast approach force (daN)	Geri dönüş kuvveti Reacting force (daN)	Ölçüler mm cinsindedir / Measurements in mm													
						A	A"	B	C	D	E	F	G	H	J	K	L	M	N
06 RXM01	50	12	600	55	58	60		474	40	6XM 6X12	M12X1.5	16	30	12	24	10	G1/8"		14
06 RXM01	100	6	670	55	58	50		577	40	6XM 6X12	M12X1.5	16	30	12	24	10	G1/8"		14
06 RXM01	100	12	600	55	58	60		800	40	6XM 6X12	M12X1.5	16	30	12	24	10	G1/8"		14
06 RXM02	50	6	1050	83	97	60		498	40	6XM 6X12	M12X1.5	16	30	12	24	10	G1/8"		14
06 RXM02	50	12	1070	83	97	70		498	40	6XM 6X12	M12X1.5	16	30	12	24	10	G1/8"		14
06 RXM02	100	6	1050	83	97	60		644	40	6XM 6X12	M12X1.5	16	30	12	24	10	G1/8"		14
06 RXM02	100	12	1070	83	97	70		628	40	6XM 6X12	M12X1.5	16	30	12	24	10	G1/8"		14
06 RXM02	150	6	1050	83	97	60		790	40	6XM 6X12	M12X1.5	16	30	12	24	10	G1/8"		14
06 RXM02	150	12	1070	83	97	70		758	40	6XM 6X12	M12X1.5	16	30	12	24	10	G1/8"		14
06 RXM03	50	6	1810	144	154	70		488	54	6XM 8X12	M16X1.5	20	40	15	26	10	G1/4"		17
06 RXM03	50	12	1660	144	154	70	85	530	54	6XM 8X12	M16X1.5	20	40	15	26	10	G1/4"	205	17
06 RXM03	70	25	1660	144	154	70	85	663	54	6XM 8X12	M16X1.5	20	40	15	26	10	G1/4"	245	17
06 RXM03	100	6	1810	144	154	70		620	54	6XM 8X12	M16X1.5	20	40	15	26	10	G1/4"		17
06 RXM03	100	12	1660	144	154	70	85	652	54	6XM 8X12	M16X1.5	20	40	15	26	10	G1/4"	305	17
06 RXM03	100	25	1660	144	154	70	85	734	54	6XM 8X12	M16X1.5	20	40	15	26	10	G1/4"	305	17
06 RXM03	100	40	2000	144	154	70	110	760	54	6XM 8X12	M16X1.5	20	40	15	26	10	G1/4"	305	17
06 RXM03	150	6	1810	144	154	70		752	54	6XM 8X12	M16X1.5	20	40	15	26	10	G1/4"		17
06 RXM03	150	12	1660	144	154	70	85	774	54	6XM 8X12	M16X1.5	20	40	15	26	10	G1/4"	405	17
06 RXM03	150	25	1660	144	154	70	85	856	54	6XM 8X12	M16X1.5	20	40	15	26	10	G1/4"	405	17
06 RXM03	150	40	2000	144	154	70	110	872	54	6XM 8X12	M16X1.5	20	40	15	26	10	G1/4"	405	17
06 RXM03	150	50	2000	144	154	70	110	916	54	6XM 8X12	M16X1.5	20	40	15	26	10	G1/4"	405	17
06 RXM03	200	6	1810	144	154	70		884	54	6XM 8X12	M16X1.5	20	40	15	26	10	G1/4"		17
06 RXM03	200	12	1660	144	154	70	85	896	54	6XM 8X12	M16X1.5	20	40	15	26	10	G1/4"	505	17
06 RXM03	200	25	1660	144	154	70	85	979	54	6XM 8X12	M16X1.5	20	40	15	26	10	G1/4"	505	17
06 RXM03	200	40	2000	144	154	70	110	984	54	6XM 8X12	M16X1.5	20	40	15	26	10	G1/4"	505	17
06 RXM03	200	60	2000	144	154	70	110	1071	54	6XM 8X12	M16X1.5	20	40	15	26	10	G1/4"	505	17
06 RXM03	250	60	2000	144	154	70	110	1183	54	6XM 8X12	M16X1.5	20	40	15	26	10	G1/4"	605	17

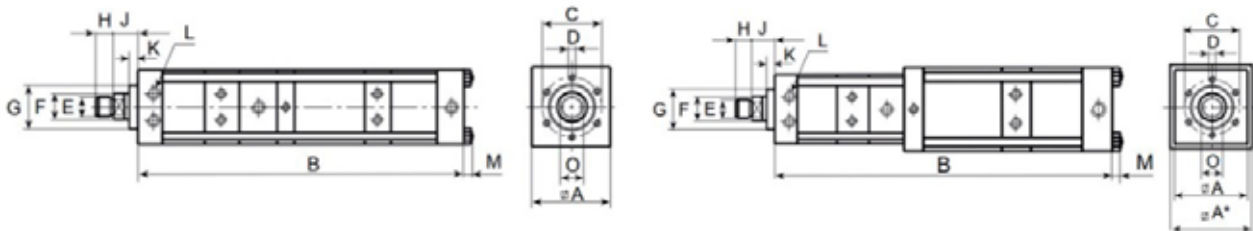
Güç değişimi %±5 The power is stated ±5%



Genel ölçü tablosu / General dimensions table

Tip Type	Toplam strok (mm)	Güç Stroğu (mm)	Maks. kuvvet (daN)	Hızlı ilerleme stroğu (daN)	Geri dönüş kuvveti (daN)	Ölçüler mm cinsindedir / Measurements in mm														
						A	A''	B	C	D	E	F	G	H	J	K	L	M	N	O
06 RXM4	50	6	3330	187	200	85		563	64	6XM 8X15	M22X2	30	50	20	28.5	10	G3/8"			24
06 RXM4	50	12	3330	187	200	85		641	64	6XM 8X15	M22X2	30	50	20	28.5	10	G3/8"			24
06 RXM4	70	25	4070	187	200	90	110	767	64	6XM 8X15	M22X2	30	50	20	28.5	10	G3/8"		251	24
06 RXM4	100	6	3330	187	200	85		709	64	6XM 8X15	M22X2	30	50	20	28.5	10	G3/8"			24
06 RXM4	100	12	3330	187	200	85		787	64	6XM 8X15	M22X2	30	50	20	28.5	10	G3/8"			24
06 RXM4	100	25	4070	187	200	90	110	843	64	6XM 8X15	M22X2	30	50	20	28.5	10	G3/8"		311	24
06 RXM4	150	6	3330	187	200	85		855	64	6XM 8X15	M22X2	30	50	20	28.5	10	G3/8"			24
06 RXM4	150	12	3330	187	200	85		933	64	6XM 8X15	M22X2	30	50	20	28.5	10	G3/8"			24
06 RXM4	150	25	4070	187	200	90	110	969	64	6XM 8X15	M22X2	30	50	20	28.5	10	G3/8"		411	24
06 RXM4	150	40	3600	187	200	90	135	926	64	6XM 8X15	M22X2	30	50	20	28.5	10	G3/8"	13	411	24
06 RXM4	200	6	3330	187	200	85		1001	64	6XM 8X15	M22X2	30	50	20	28.5	10	G3/8"			24
06 RXM4	200	12	3330	187	200	85		1079	64	6XM 8X15	M22X2	30	50	20	28.5	10	G3/8"			24
06 RXM4	200	25	4070	187	200	90	110	1095	64	6XM 8X15	M22X2	30	50	20	28.5	10	G3/8"		511	24
06 RXM4	200	40	3600	187	200	90	135	1042	64	6XM 8X15	M22X2	30	50	20	28.5	10	G3/8"	13	511	24
06 RXM4	200	50	3600	187	200	90	135	1093	64	6XM 8X15	M22X2	30	50	20	28.5	10	G3/8"	13	511	24
06 RXM4	250	12	3330	187	200	85		1225	64	6XM 8X15	M22X2	30	50	20	28.5	10	G3/8"			24
06 RXM4	250	25	4070	187	200	90	110	1221	64	6XM 8X15	M22X2	30	50	20	28.5	10	G3/8"		611	24
06 RXM4	250	40	3600	187	200	90	135	1158	64	6XM 8X15	M22X2	30	50	20	28.5	10	G3/8"	13	611	24
06 RXM4	300	60	3600	187	200	90	135	1377	64	6XM 8X15	M22X2	30	50	20	28.5	10	G3/8"	13	711	24
06 RXM4	400	60	3600	187	200	90	135	1611	64	6XM 8X15	M22X2	30	50	20	28.5	10	G3/8"	13	911	24
06 RXM5	50	6	7820	324	344	110		651	88	6XM 10X16	M30X2	45	70	25	35	10	G1/2"			36
06 RXM5	50	12	7820	324	344	110		755	88	6XM 10X16	M30X2	45	70	25	35	10	G1/2"			36
06 RXM5	50	20	6910	324	344	115	135	731	88	6XM 10X16	M30X2	45	70	25	35	10	G1/2"	13	241	36
06 RXM5	100	6	7820	324	344	110		801	88	6XM 10X16	M30X2	45	70	25	35	10	G1/2"			36
06 RXM5	100	12	7820	324	344	110		905	88	6XM 10X16	M30X2	45	70	25	35	10	G1/2"			36
06 RXM5	100	25	6910	324	344	115	135	912	88	6XM 10X16	M30X2	45	70	25	35	10	G1/2"	13	341	36
06 RXM5	100	40	7230	324	344	115	170	943	88	6XM 10X16	M30X2	45	70	25	35	10	G1/2"	17	341	36
06 RXM5	150	6	7820	324	344	110		951	88	6XM 10X16	M30X2	45	70	25	35	10	G1/2"			36
06 RXM5	150	12	7820	324	344	110		1055	88	6XM 10X16	M30X2	45	70	25	35	10	G1/2"			36
06 RXM5	150	25	6910	324	344	115	135	1044	88	6XM 10X16	M30X2	45	70	25	35	10	G1/2"	13	441	36
06 RXM5	150	40	7230	324	344	115	170	1063	88	6XM 10X16	M30X2	45	70	25	35	10	G1/2"	17	441	36
06 RXM5	200	6	7820	324	344	110		1101	88	6XM 10X16	M30X2	45	70	25	35	10	G1/2"			36
06 RXM5	200	12	7820	324	344	110		1205	88	6XM 10X16	M30X2	45	70	25	35	10	G1/2"			36
06 RXM5	200	25	6910	324	344	115	135	1176	88	6XM 10X16	M30X2	45	70	25	35	10	G1/2"	13	541	36
06 RXM5	200	40	7830	324	344	115	170	1183	88	6XM 10X16	M30X2	45	70	25	35	10	G1/2"	17	541	36
06 RXM5	200	60	7830	324	344	115	170	1308	88	6XM 10X16	M30X2	45	70	25	35	10	G1/2"	17	541	36
06 RXM5	250	12	7820	324	344	110		1355	88	6XM 10X16	M30X2	45	70	25	35	10	G1/2"			36
06 RXM5	250	25	6910	324	344	115	135	1308	88	6XM 10X16	M30X2	45	70	25	35	10	G1/2"	13	641	36
06 RXM5	250	40	7230	324	344	115	170	1303	88	6XM 10X16	M30X2	45	70	25	35	10	G1/2"	17	641	36
06 RXM5	300	60	7230	324	344	115	170	1548	88	6XM 10X16	M30X2	45	70	25	35	10	G1/2"	17	741	36
06 RXM5	400	60	7230	324	344	115	170	1788	88	6XM 10X16	M30X2	45	70	25	35	10	G1/2"	17	941	36

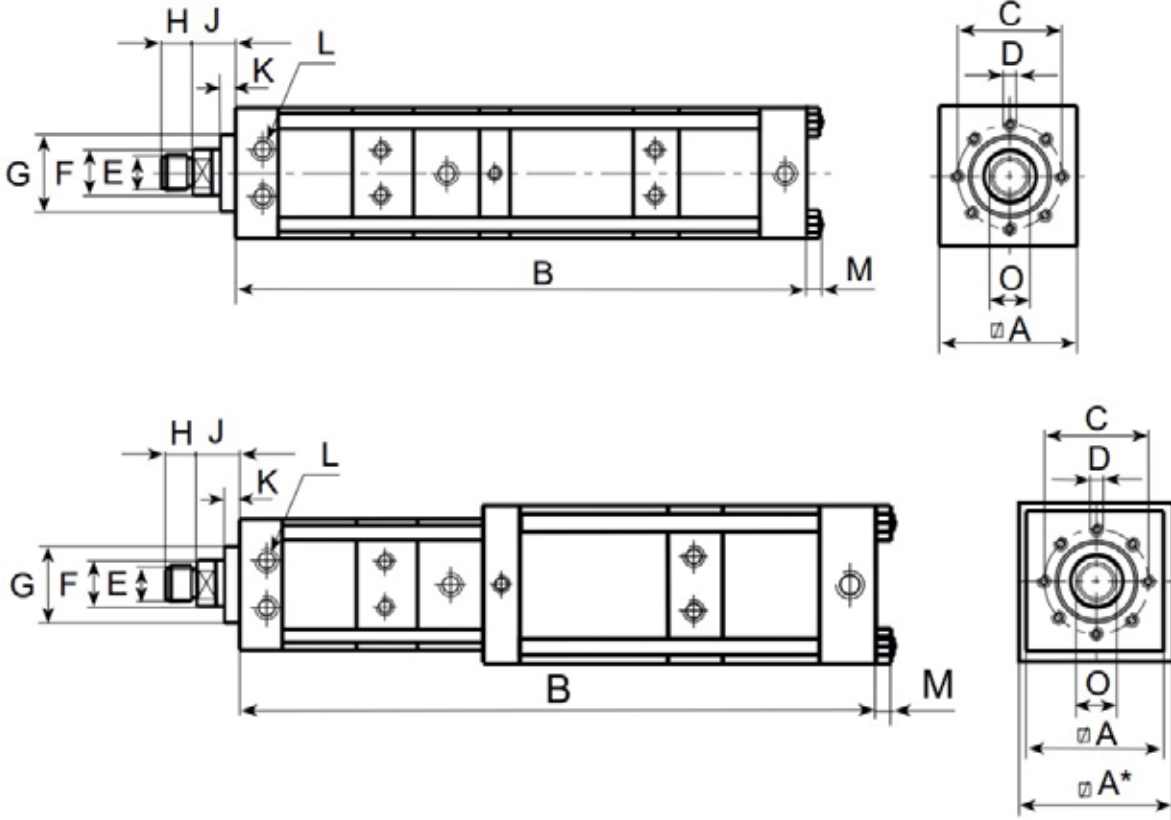
Güç değişimi %±5 The power is stated ±5%



Genel ölçü tablosu / General dimensions table

Tip Type	Toplam strok Total stroke (mm)	Güç Stroğu Power stroke (mm)	Maks. kuvvet Max. force (daN)	Hızlı ilerleme stroğu Fast approach force (daN)	Geri dönüş kuvveti Reacting force (daN)	Ölçüler mm cinsindedir / Measurements in mm														
						A	A''	B	C	D	E	F	G	H	J	K	L	M	N	O
06 RXM06	50	6	13380	460	565	135		693	100	6XM 16X25	M30X2	50	75	25	36	15	G1/2"	17		41
06 RXM06	50	12	13380	460	565	135		807	100	6XM 16X25	M30X2	50	75	25	36	15	G1/2"	17		41
06 RXM06	100	6	13380	460	565	135		855	100	6XM 16X25	M30X2	50	75	25	36	15	G1/2"	17		41
06 RXM06	100	12	13380	460	565	135		970	100	6XM 16X25	M30X2	50	75	25	36	15	G1/2"	17		41
06 RXM06	100	25	14000	460	565	140	170	1054	100	6XM 16X25	M30X2	50	75	25	36	15	G1/2"	17	353	41
06 RXM06	150	6	13380	460	565	135		1018	100	6XM 16X25	M30X2	50	75	25	36	15	G1/2"	17		41
06 RXM06	150	12	13380	460	565	135		1133	100	6XM 16X25	M30X2	50	75	25	36	15	G1/2"	17		41
06 RXM06	150	25	14000	460	565	140	170	1194	100	6XM 16X25	M30X2	50	75	25	36	15	G1/2"	17	453	41
06 RXM06	150	40	13380	460	565	140	200	1269	100	6XM 16X25	M30X2	50	75	25	36	15	G1/2"	17	453	41
06 RXM06	200	6	13380	460	565	135		1181	100	6XM 16X25	M30X2	50	75	25	36	15	G1/2"	17		41
06 RXM06	200	12	13380	460	565	135		1269	100	6XM 16X25	M30X2	50	75	25	36	15	G1/2"	17		41
06 RXM06	200	25	14000	460	565	140	170	1334	100	6XM 16X25	M30X2	50	75	25	36	15	G1/2"	17	553	41
06 RXM06	200	40	13380	460	565	140	200	1399	100	6XM 16X25	M30X2	50	75	25	36	15	G1/2"	17	553	41
06 RXM06	250	12	13380	460	565	135		1459	100	6XM 16X25	M30X2	50	75	25	36	15	G1/2"	17		41
06 RXM06	250	25	14000	460	565	140	170	1474	100	6XM 16X25	M30X2	50	75	25	36	15	G1/2"	17	653	41
06 RXM06	250	40	13380	460	565	140	200	1529	100	6XM 16X25	M30X2	50	75	25	36	15	G1/2"	17	653	41
06 RXM06	300	40	13380	460	565	140	200	1659	100	6XM 16X25	M30X2	50	75	25	36	15	G1/2"	17	753	41
06 RXM07	50	6	28300	675	970	170		803	132	6XM 20X30	M39X2	56	100	35	47	18	G3/4"	23		50
06 RXM07	100	6	28300	675	970	170		981	132	6XM 20X30	M39X2	56	100	35	47	18	G3/4"	23		50
06 RXM07	100	12	28300	675	970	170		1131	132	6XM 20X30	M39X2	56	100	35	47	18	G3/4"	23		50
06 RXM07	100	20	30650	675	970	190	270	998	132	6XM 20X30	M39X2	56	100	35	47	18	G3/4"	23	361	50
06 RXM07	150	6	28300	675	970	170		1159	132	6XM 20X30	M39X2	56	100	35	47	18	G3/4"	23		50
06 RXM07	150	12	28300	675	970	170		1309	132	6XM 20X30	M39X2	56	100	35	47	18	G3/4"	23		50
06 RXM07	150	25	30650	675	970	190	270	1185	132	6XM 20X30	M39X2	56	100	35	47	18	G3/4"	17	461	50
06 RXM07	200	6	28300	675	970	170		1337	132	6XM 20X30	M39X2	56	100	35	47	18	G3/4"	23		50
06 RXM07	200	12	28300	675	970	170		1487	132	6XM 20X30	M39X2	56	100	35	47	18	G3/4"	23		50
06 RXM07	200	25	30650	675	970	190	270	1317	132	6XM 20X30	M39X2	56	100	35	47	18	G3/4"	17	561	50
06 RXM07	200	35	30650	675	970	190	270	1428	132	6XM 20X30	M39X2	56	100	35	47	18	G3/4"	17	561	50
06 RXM07	250	12	28300	675	970	170		1665	132	6XM 20X30	M39X2	56	100	35	47	18	G3/4"	23		50
06 RXM07	300	25	30650	675	970	190	270	1581	132	6XM 20X30	M39X2	56	100	35	47	18	G3/4"	17	761	50
06 RXM07	300	40	30650	675	970	190	270	1748	132	6XM 20X30	M39X2	56	100	35	47	18	G3/4"	17	761	50
06 RXM07	400	40	30650	675	970	190	270	2012	132	6XM 20X30	M39X2	56	100	35	47	18	G3/4"	17	961	50

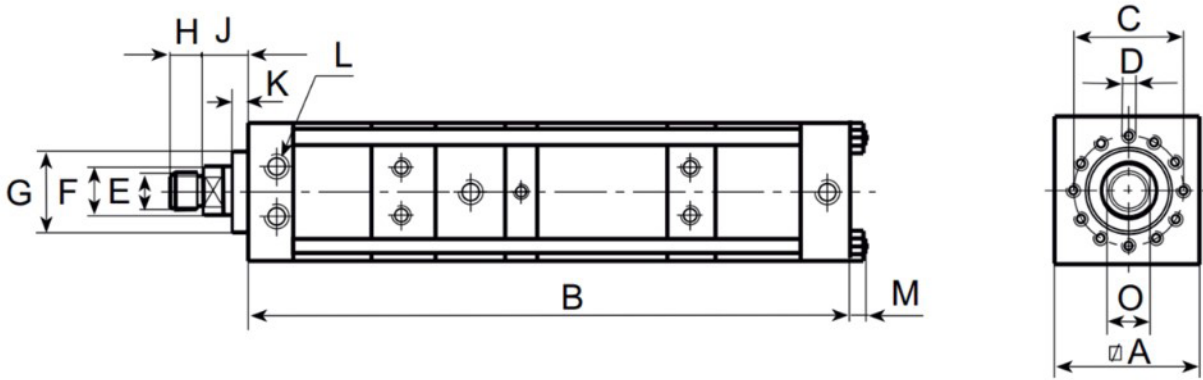
Güç değişimi %±5 The power is stated ±5%



Genel ölçü tablosu / General dimensions table

Tip Type	Toplam strok Total stroke (mm)	Güç Stroğu Power stroke (mm)	Maks. kuvvet Max. force (daN)	Hızlı ilerleme stroğu Fast approach force (daN)	Geri dönüş kuvveti Reacting force (daN)	Ölçüler mm cinsindedir / Measurements in mm														
						A	A"	B	C	D	E	F	G	H	J	K	L	M	N	O
06 RXM08	70	6	45900	725	1225	200		957	150	8XM 20X30	M42X2	63	115	40	52	25	G3/4"	31		55
06 RXM08	100	6	45900	725	1225	200		1075	150	8XM 20X30	M42X2	63	115	40	52	25	G3/4"	31		55
06 RXM08	100	12	47600	725	1225	200	270	1026	150	8XM 20X30	M42X2	63	115	40	52	25	G3/4"	17	367	55
06 RXM08	150	6	45900	725	1225	200		1271	150	8XM 20X30	M42X2	63	115	40	52	25	G3/4"	31		55
06 RXM08	200	10	45900	725	1225	200		1597	150	8XM 20X30	M42X2	63	115	40	52	25	G3/4"	31		55
06 RXM08	200	20	47600	725	1225	220	270	1465	150	8XM 20X30	M42X2	63	115	40	52	25	G3/4"	17	567	55
06 RXM08	250	10	45900	725	1225	200		1793	150	8XM 20X30	M42X2	63	115	40	52	25	G3/4"	31		55
06 RXM08	300	20	47600	725	1225	220	270	1765	150	8XM 20X30	M42X2	63	115	40	52	25	G3/4"	17	767	55
06 RXM08	300	30	47600	725	1225	220	325	1693	150	8XM 20X30	M42X2	63	115	40	52	25	G3/4"	21	767	55
06 RXM08	400	40	47600	725	1225	220	325	2084	150	8XM 20X30	M42X2	63	115	40	52	25	G3/4"	21	967	55

Güç değişimi %±5 The power is stated ±5%



Genel ölçü tablosu / General dimensions table

Tip Type	Toplam strok Total stroke (mm)	Güç Stroğu Power stroke (mm)	Maks. kuvvet Max. force (daN)	Hızlı ilerleme stroğu Fast approach force (daN)	Geri dönüş kuvveti Reacting force (daN)	Ölçüler mm cinsindedir / Measurements in mm														
						A	A"	B	C	D	E	F	G	H	J	K	L	M	N	O
06 RXM09	100	10	72700	1300	2250	325		1329	200	12XM 24X40	M64X2	100	150	60	60	25	G 1"	31		85
06 RXM09	150	10	72700	1300	2250	325		1533	200	12XM 24X40	M64X2	100	150	60	60	25	G 1"	31		85
06 RXM09	200	13	72700	1300	2250	325		1809	200	12XM 24X40	M64X2	100	150	60	60	25	G 1"	31		85
06 RXM09	250	12	72700	1300	2250	325		2013	200	12XM 24X40	M64X2	100	150	60	60	25	G 1"	31		85
06 RXM09	300	16	72700	1300	2250	325		2288	200	12XM 24X40	M64X2	100	150	60	60	25	G 1"	31		85
06 RXM10	100	8	98500	1300	2250	325		1329	200	12XM 24X40	M64X2	100	150	60	60	25	G 1"	31		85
06 RXM10	150	8	98500	1300	2250	325		1533	200	12XM 24X40	M64X2	100	150	60	60	25	G 1"	31		85
06 RXM10	200	10	98500	1300	2250	325		1809	200	12XM 24X40	M64X2	100	150	60	60	25	G 1"	31		85
06 RXM10	250	10	98500	1300	2250	325		2013	200	12XM 24X40	M64X2	100	150	60	60	25	G 1"	31		85
06 RXM10	300	12	98500	1300	2250	325		2288	200	12XM 24X40	M64X2	100	150	60	60	25	G 1"	31		85

Güç değişimi %±5 The power is stated ±5%

BOOSTER

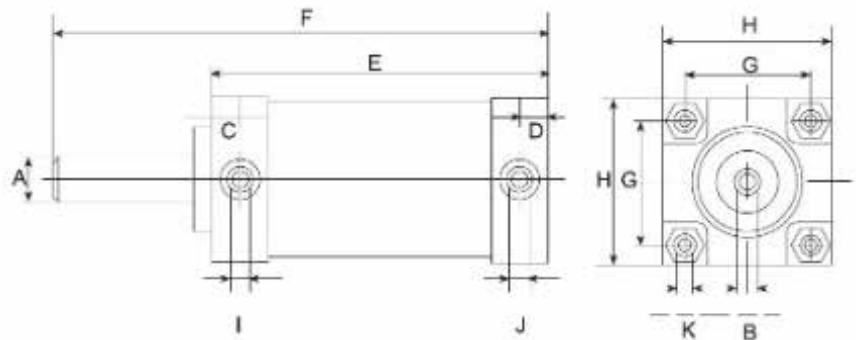
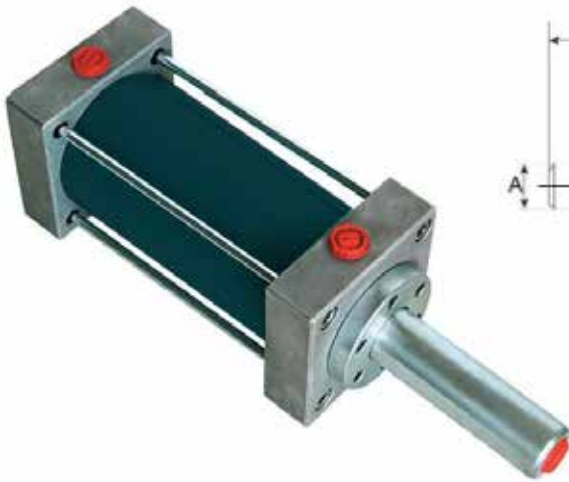


Table general dimensions / Tabelle: Allgemeine dimensionen

Mesurements in mm / Maße in mm

Type Typ	Bore size Kolben Ø	Piston rod Stangen Ø	Stroke Hub	Ratio Übersetzung	Fluid pressure air 6 bar Flüssigkeitsdruck bei 6 bar	Fluid volume stroke 150mm Flüssigkeitsvolumen bei 150mm	Fluid volume stroke 10mm Flüssigkeitsvolumen bei 10mm	Efficiency air at 6 bar Wirkungsgrad bei 6 bar (Luft) µ
RBS-101-150	100	22	150	20.66/1	124	50	3.80	0.85
RBS-102-150	100	30	150	11.11/1	66	92	7.06	0.85
RBS-121-150	125	22	150	32.28/1	194	50	3.80	0.85
RBS-122-150	125	30	150	17.36/1	104	92	7.06	0.85
RBS-161-150	160	22	150	52.89/1	317	50	3.80	0.9
RBS-162-150	160	30	150	28.44/1	170	92	7.06	0.9
RBS-163-150	160	40	150	16/1	96	163	12.56	0.9
RBS-201-150	200	22	150	82.64/1	495	50	3.80	0.9
RBS-202-150	200	30	150	44.44/1	266	92	7.06	0.9
RBS-203-150	200	40	150	25.00/1	150	163	12.56	0.9

The power is stated ±5% Kraftangaben ±5%

Note: Table dimensions are our standart program dimensions but you can contact with our company for your special needs.

Note: Die Maßen in der Tabelle sind unsere Standartprodukte. Für Ihre spezielle Maßen setzen Sie sich bitte mit unserer Firma in Verbindung.

Formulas to calculate different strokes from the standart ones: $E=X+Stroke$, $F=Y+2Stroke$

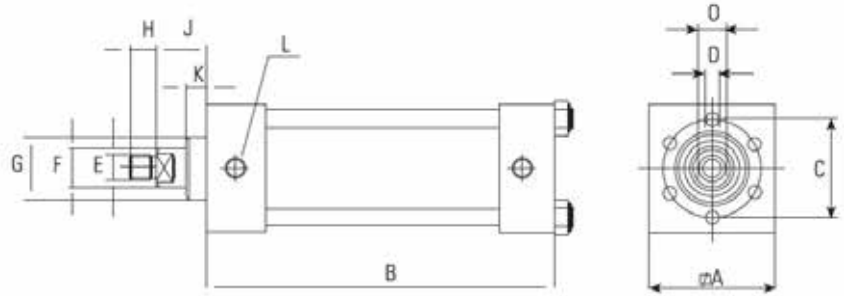
Formel zum Berechnen abweichender Hübe: $E=X+Hub$, $F=Y+2Hub$

Table general dimensions / Tabelle: Allgemeine dimensionen

Mesurements in mm / Maße in mm

Type Typ	Bore size Kolben Ø	Useful stroke Nutzbarer hub	A	B	C	D	E	F	G	H	I	J	K	X	Y
RBS-101-150	100	130	38	1/2"	20	20	283	433	93.3	120	1/2"	1/2"	M8	153	173
RBS-102-150															
RBS-121-150															
RBS-122-150	125	130	38	1/2"	20	23	283	433	106	140	1/2"	1/2"	M12	163	183
RBS-161-150															
RBS-162-150															
RBS-163-150	160	130	55	1/2"	25	23	295	442	134.4	180	3/4"	1/2"	M14	165	183
RBS-201-150															
RBS-202-150															
RBS-203-150	200	130	55	1/2"	25	23	306	453	165.5	220	3/4"	1/2"	M16	176	193

HİDROLİK SİLİNDİRLER



Sample order / Bestell-Beispiel

HS01 - 100

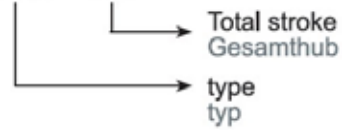


Table general dimensions / Tabelle: Allgemeine dimensionen

Mesurements in mm / Maße in mm

Type Typ	Total stroke Gesamthub (mm)	Hydraulic pressure Hydraulik Druck (kg/cm ²)	Pneumatic Pressure Pneumatischer Druck (kg/cm ²)	max. Force max. Kraft (daN)	Retracting Force Rückzugskraft (daN)														
						A	B	C	D	E	F	G	H	J	K	L	M	O	S
RHS01	50	250	6	3140	55	60	164	40	6XM 6X12	M12X1.5	18	32	12	24	10	G1/8"	14	G3/8"	
RHS01	100	250	6	3140	55	60	214	40	6XM 6X12	M12X1.5	18	32	12	24	10	G1/8"	14	G3/8"	
RHS01	150	250	6	3140	55	60	264	40	6XM 6X12	M12X1.5	18	32	12	24	10	G1/8"	14	G3/8"	
RHS01	200	250	6	3140	55	60	314	40	6XM 6X12	M12X1.5	18	32	12	24	10	G1/8"	14	G3/8"	
RHS02	50	250	6	4910	84	70	164	54	6XM 8X12	M16X1.5	22	40	15	26	10	G1/4"	17	G1/2"	
RHS02	100	250	6	4910	84	70	214	54	6XM 8X12	M16X1.5	22	40	15	26	10	G1/4"	17	G1/2"	
RHS02	150	250	6	4910	84	70	264	54	6XM 8X12	M16X1.5	22	40	15	26	10	G1/4"	17	G1/2"	
RHS02	200	250	6	4910	84	70	314	54	6XM 8X12	M16X1.5	22	40	15	26	10	G1/4"	17	G1/2"	
RHS03	50	250	6	7750	136	85	170	64	6XM 8X15	M22X2	28	50	20	28.5	10	G3/8"	24	G1/2"	
RHS03	100	250	6	7750	136	85	220	64	6XM 8X15	M22X2	28	50	20	28.5	10	G3/8"	24	G1/2"	
RHS03	150	250	6	7750	136	85	270	64	6XM 8X15	M22X2	28	50	20	28.5	10	G3/8"	24	G1/2"	
RHS03	200	250	6	7750	136	85	320	64	6XM 8X15	M22X2	28	50	20	28.5	10	G3/8"	24	G1/2"	
RHS03	300	250	6	7750	136	85	420	64	6XM 8X15	M22X2	28	50	20	28.5	10	G3/8"	24	G1/2"	
RHS03	400	250	6	7750	136	85	520	64	6XM 8X15	M22X2	28	50	20	28.5	10	G3/8"	24	G1/2"	
RHS04	50	250	6	11000	184	110	198	88	6XM 10X16	M22X2	36	70	25	35	10	G3/8"	13	24	G3/4"
RHS04	100	250	6	11000	184	110	248	88	6XM 10X16	M22X2	36	70	25	35	10	G3/8"	13	24	G3/4"
RHS04	150	250	6	11000	184	110	298	88	6XM 10X16	M22X2	36	70	25	35	10	G3/8"	13	24	G3/4"
RHS04	200	250	6	11000	184	110	348	88	6XM 10X16	M22X2	36	70	25	35	10	G3/8"	13	24	G3/4"
RHS04	300	250	6	11000	184	110	448	88	6XM 10X16	M22X2	36	70	25	35	10	G3/8"	13	24	G3/4"
RHS04	400	250	6	11000	184	110	548	88	6XM 10X16	M22X2	36	70	25	35	10	G3/8"	13	24	G3/4"
RHS05	50	250	6	19350	336	135	212	100	6XM 16X25	M30X2	45	75	25	36	15	G1/2"	21	36	G3/4"
RHS05	100	250	6	19350	336	135	262	100	6XM 16X25	M30X2	45	75	25	36	15	G1/2"	21	36	G3/4"
RHS05	150	250	6	19350	336	135	312	100	6XM 16X25	M30X2	45	75	25	36	15	G1/2"	21	36	G3/4"
RHS05	200	250	6	19350	336	135	362	100	6XM 16X25	M30X2	45	75	25	36	15	G1/2"	21	36	G3/4"
RHS05	300	250	6	19350	336	135	462	100	6XM 16X25	M30X2	45	75	25	36	15	G1/2"	21	36	G3/4"
RHS05	400	250	6	19350	336	135	562	100	6XM 16X25	M30X2	45	75	25	36	15	G1/2"	21	36	G3/4"
RHS06	50	250	6	30000	525	160	234	132	6XM 20X30	M39X2	56	100	35	47	15	G3/4"	23	50	G1"
RHS06	100	250	6	30000	525	160	284	132	6XM 20X30	M39X2	56	100	35	47	15	G3/4"	23	50	G1"
RHS06	150	250	6	30000	525	160	334	132	6XM 20X30	M39X2	56	100	35	47	15	G3/4"	23	50	G1"
RHS06	200	250	6	30000	525	160	384	132	6XM 20X30	M39X2	56	100	35	47	15	G3/4"	23	50	G1"
RHS06	300	250	6	30000	525	160	484	132	6XM 20X30	M39X2	56	100	35	47	15	G3/4"	23	50	G1"
RHS06	400	250	6	30000	525	160	584	132	6XM 20X30	M39X2	56	100	35	47	15	G3/4"	23	50	G1"

The power is stated ±5% Kraftangaben ±5%

Please contact with our company for getting detail information

C TİPİ PRESS

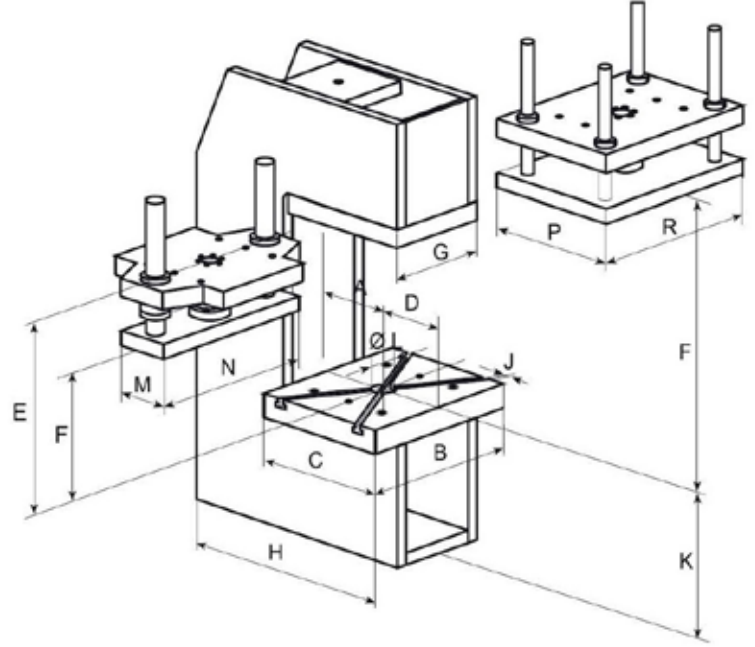


Table general dimensions / Genel ölçüler

Mesurements in mm / Ölçüler mm dir

Type Tip	Capacity Kapasite (Ton)	A	B	C	D	E	F	G	H	I	JH11	K	Ø L	M	N	P	R
RP 01	1	100	250	180	90	285	200	140	350	60	10	150	30	185	244	185	244
RP 02	2	135	320	250	125	327	240	185	455	90	10	220	40	230	319	230	319
RP 04	4	150	320	280	140	361.5	260	185	540	105	10	250	50	245	319	245	319
RP 08	8	185	400	350	175	442	305	220	665	115	12	310	50	290	384	290	384
RP 15	15	220	450	400	200	473	335	270	785	155	12	360	50	365	434	365	434
RP 30	30	250	540	460	230	549	390	330	920	190	14	420	50	450	520	450	520
RP 50	50	270	620	500	250	602	420	350	1005	190	18	460	50	450	580	450	580
RP 75	75	270	920	500	250	692	465	500	1255	250		800	70			510	760
RP 100	100	270	980	500	250	692	465	500	1255	250		800	70			510	910

Note: Table dimensions are our standart program dimensions but you can contact with our company for your special needs.

Not: tablodaki ölçüler standart üretim programımıza göre düzenlenmiştir. Özel ihtiyaçlarınız için firmamız ile temasa geçiniz.

2 SÜTUNLU PRESS

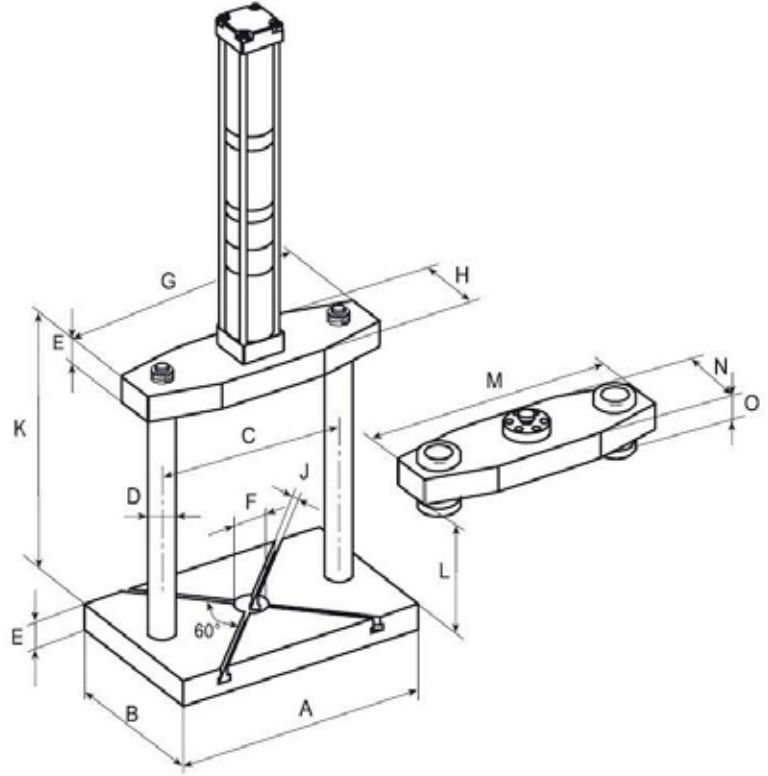


Table general dimensions / Genel ölçüler

Mesurements in mm / Ölçüler mm dir

Type Tip	Capacity Kapasite (Ton)	A	B	C	Ø D	E	Ø F	G	H	JH11	K	L	M	N	O
RP2 01	1	400	240	280	30	29	40	398	110	10	390	238	392	104	28
RP2 02	2	400	260	280	40	39	40	398	130	10	380	236	392	124	28
RP2 04	4	400	300	280	40	39	50	398	130	10	420	252	392	124	28
RP2 08	8	460	350	300	50	49	50	458	160	10	450	225	452	154	38
RP2 15	15	460	350	300	50	59	50	458	160	12	480	245	452	154	48
RP2 30	30	500	350	300	63	69	60	498	230	12	490	224	492	224	48
RP2 50	50	500	350	300	80	89	60	498	280	12	550	241	492	274	58

Note: Table dimensions are our standart program dimensions but you can contact with our company for your special needs.

Not: tablodaki ölçüler standart üretim programımıza göre düzenlenmiştir. Özel ihtiyaçlarınız için firmamız ile temasa geçiniz.

4 SÜTUNLU PRESS

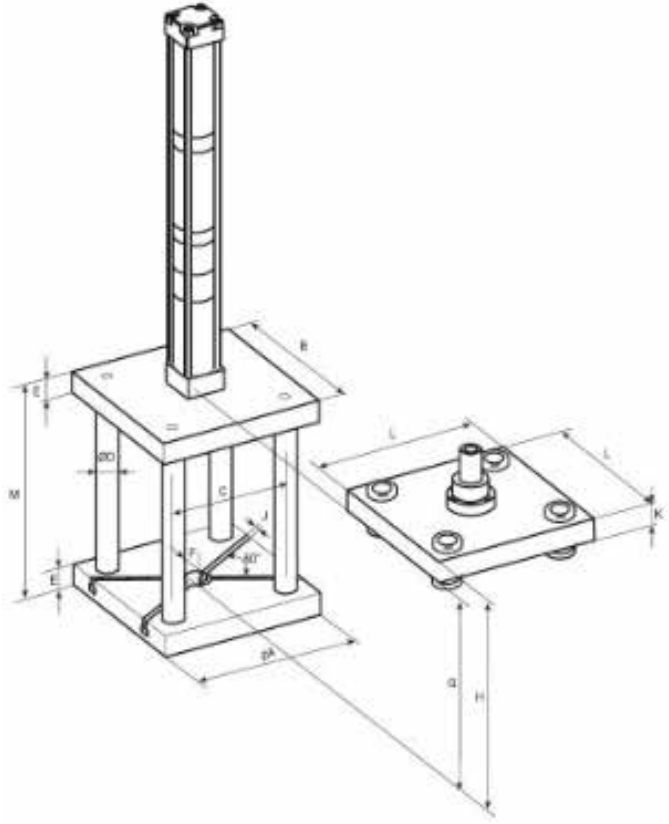


Table general dimensions / Genel ölçüler

Mesurements in mm / Ölçüler mm dir

Type Tip	Capacity Kapasite (Ton)	A	B	C	Ø D	E	Ø F	G	H	JH11	K	L	M
RP4 01	1	200	195	136	20	29	40	219	120	8	29	193	248
RP4 02	2	250	245	170	25	39	40	274	120	10	39	243	323
RP4 04	4	300	295	206	30	39	50	334	150	10	39	293	373
RP4 08	8	350	345	226	30	49	50	394	170	12	49	343	443
RP4 15	15	400	395	276	40	59	50	454	190	12	59	393	513
RP4 30	30	450	445	300	50	69	50	514	210	12	69	443	583
RP4 50	50	500	495	330	63	79	50	574	230	14	79	493	653

PRESS MASALARI

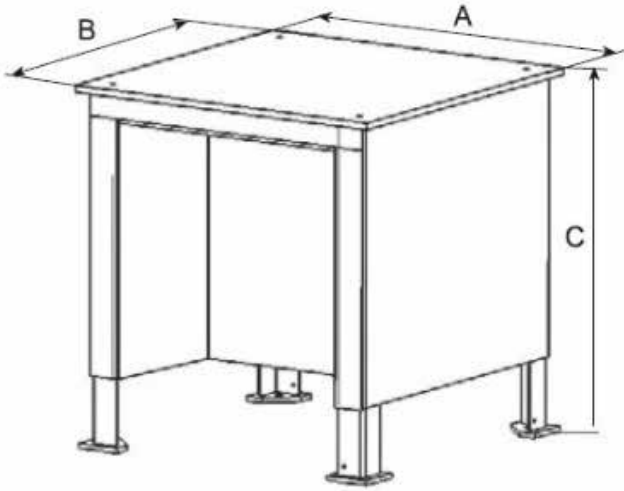


Table general dimensions Genel ölçüler		Measurements in mm Ölçüler mm dir		
Type Tip	A	B	C	
R1-01	600	600	750	
R1-02	750	750	750	
R1-04	750	750	750	
R1-08	750	750	750	
R1-15	750	750	750	
R1-30	850	850	750	
R1-50	850	850	750	

Masalar 2 sütunlu ve 4 sütunlu presler için dizayn edilmiştir.

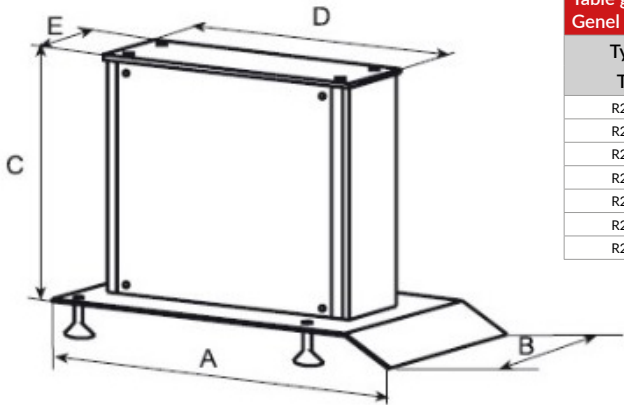
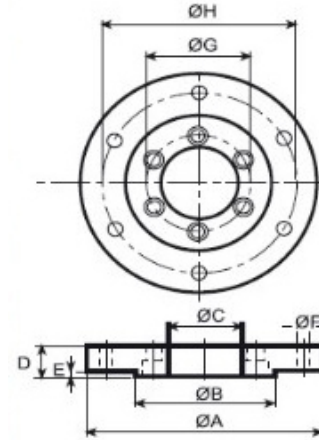


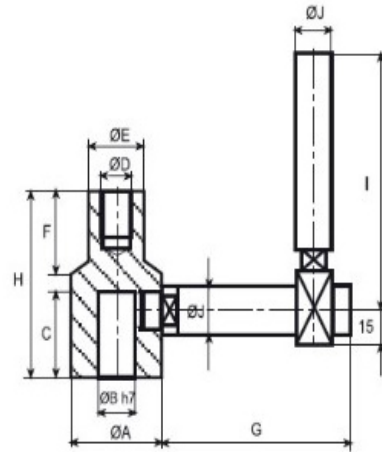
Table general dimensions Genel ölçüler				Measurements in mm Ölçüler mm dir		
Type Tip	A	B	C	D	E	
R2-01	500	600	650	350	140	
R2-02	600	600	580	455	185	
R2-04	690	600	550	540	185	
R2-08	815	700	490	685	220	
R2-15	935	700	440	785	270	
R2-30	915	700	380	920	330	
R2-50	1000	700	340	1005	350	

Pres ayakları C tipi pres gövdeleri için dizayn edilmiş olup, yer ile pres gövdesi arası 800mm'dir.

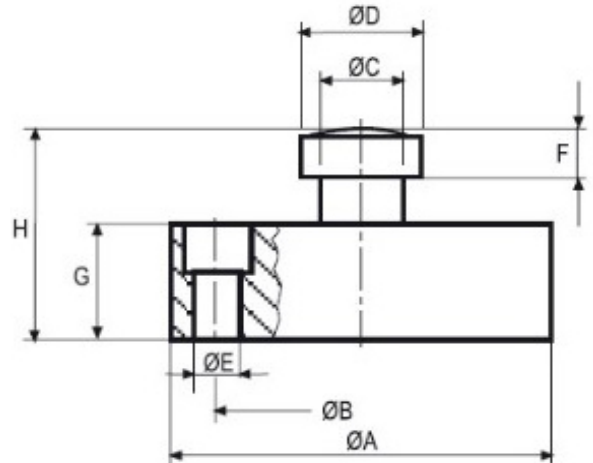
Front mounting flange Ön bağlantı flanşı				Measurements in mm Ölçüler mm dir				
Type Tip	A	B	C	D	E	F	G	H
RAF 01 00	88	55	30	19	3	6.5	40	75
RAF 02 00	88	62	30	19	3	6.5	40	75
RAF 03 00	124	75	40	24	3	9	54	105
RAF 04 00	144	85	50	24	4	9	64	125
RAF 05 00	175	112	70	29	4	11	88	156
RAF 06 00	220	136	75	29	5	17	100	195
RAF 07 00	270	170	100	36	5	21	132	255



Tool holding fixture 03 Dönmezlik parçası				Measurements in mm Ölçüler mm dir						
Type Tip	A	B	C	D	E	F	G	H	I	J
RAC 01 03	35	20	32	M12X1.5	16	28	80	46	210	12
RAC 02 03	35	20	32	M12X1.5	16	28	80	46	210	12
RAC 03 03	45	20	32	M16X1.5	20	28	95	46	210	12
RAC 04 03	65	20	32	M22X2	30	36	112	58	225	16
RAC 05 03	65	40	50	M30X2	45	54	115	82	275	20
RAC 06 03	75	40	50	M30X2	50	54	135	82	275	20
RAC 07 03	85	40	50	M39X2	56	56	152	88	300	25
RAC 08 03	95	40	50	M42X2	63	68	160	106	325	25



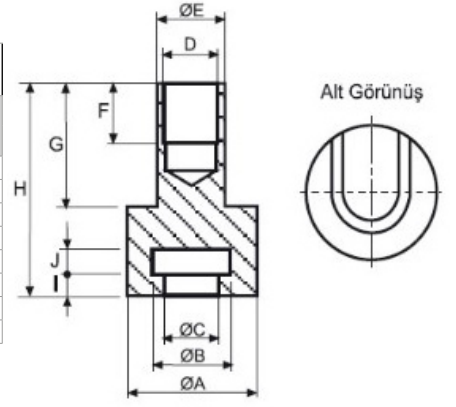
Tool holding fixture 02 Sabitleme parçası				Measurements in mm Ölçüler mm dir				
Type Tip	A	B	C	D	E	F	G	H
RAC 01 02	67	50	16	23	6.5	7	15	28
RAC 02 02	67	50	16	23	6.5	7	15	28
RAC 03 02	67	50	16	23	6.5	7	15	28
RAC 04 02	67	50	26	33	6.5	7	15	28
RAC 05 02	98	75	33	49	11	10	20	39
RAC 06 02	98	75	33	49	11	10	20	39
RAC 07 02	98	75	41	59	11	12	24	46
RAC 08 02	98	75	52	75	11	15	24	52



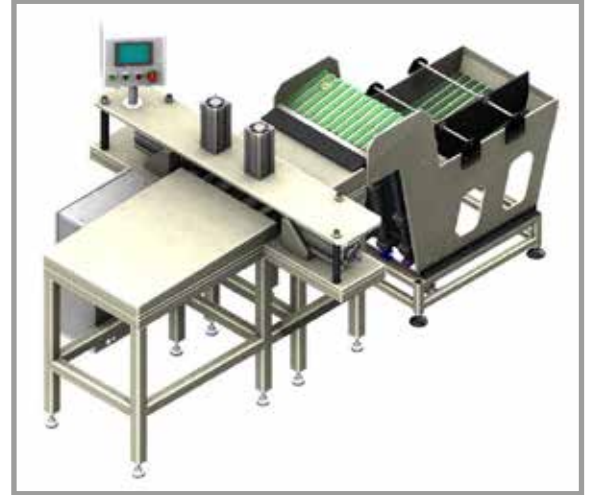
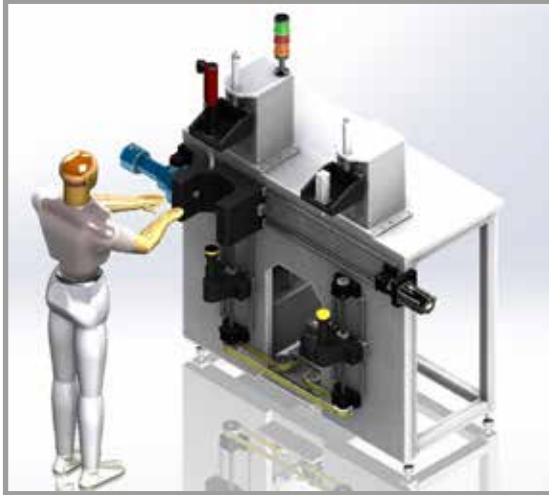
Tool holding fixture 01
Sabitleme parçası

Mesurements in mm
Ölçüler mm dir

Type Tip	A	B	C	D	E	F	G	H	I	J
RAC 01 01	35	23	16	M12X1.5	16	15	28	46	5	7
RAC 02 01	35	23	16	M12X1.5	16	15	28	46	5	7
RAC 03 01	45	23	16	M16X1.5	20	15	28	46	5	7
RAC 04 01	65	33	26	M22X2	30	24	36	58	5	7
RAC 05 01	65	49	33	M30X2	45	29	54	82	8	10
RAC 06 01	75	49	33	M30X2	50	2	54	82	8	10
RAC 07 01	85	59	41	M39X2	56	9	56	88	10	12
RAC 08 01	95	75	52	M42X2	63	39	68	106	13	15



ÖZEL MAKİNELER

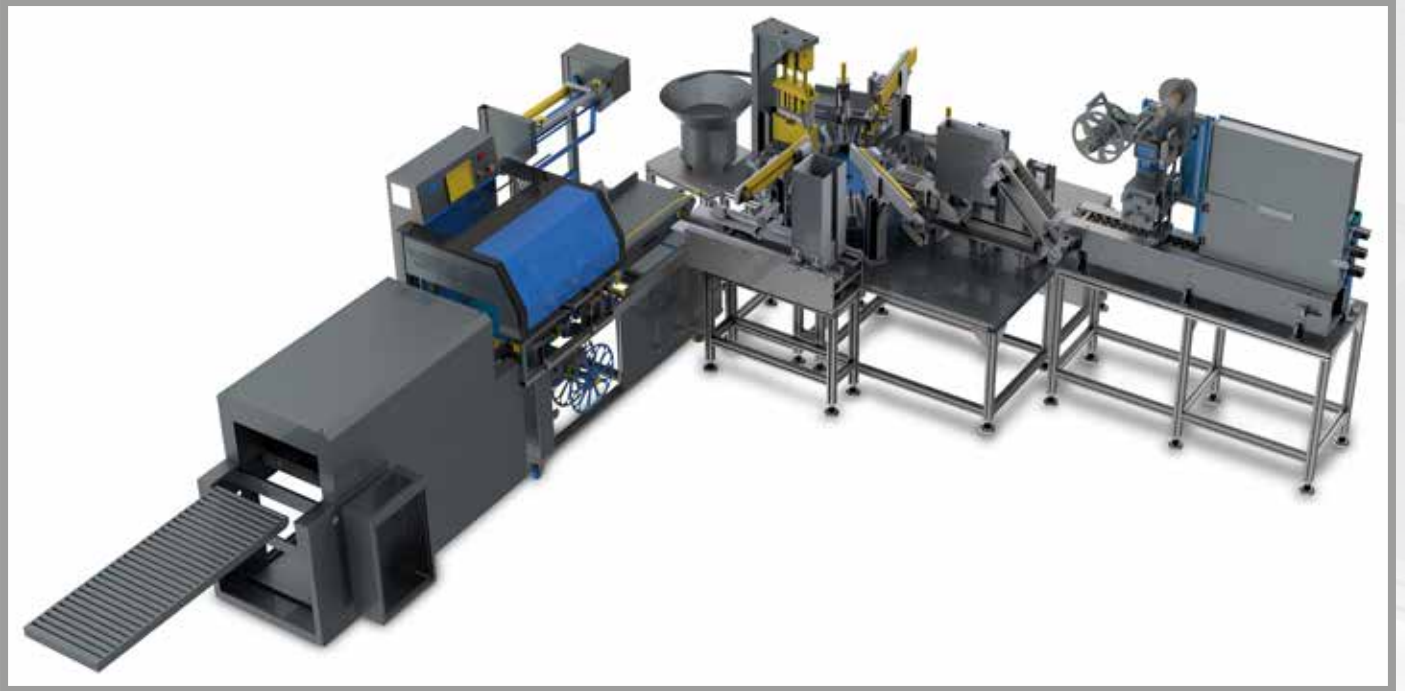


BORU UCU KAPAMA MAKİNESİ



Çap:	12-56 mm 316 kalite paslanmaz
	S=0,8-2 mm
	Hainbuch pena takımı
	Pens
	Kitagawa hidrolik çektirme
Taipan indüksiyon:	25 kW 30-80 Hz
Chiller:	6.000 KCal/saat
İndüksiyon boyu:	50-60 mm
İşlem süresi:	3-4 sn
Sıcaklık:	950 °C

TÜP DOLUM HATTI



EKSANTRİK PRESS HİDROLİK DONANIM

ÇAP (140-160-200) HİDROLİK SİLİNDİRLER



ÜNİTELER



İLETİŞİM

☎ 0224 441 5 888

✉ info@rexmak.com

🌐 www.rexmak.com

📍 Fabrika:Çalı, Sanayi Bölgesi 22. SOKAK NO:7,
16130 Nilüfer/Bursa

